



# GAT MONTHLY MEMBERSHIP PROGRESS REPORT

Results as of: 12/31/2021

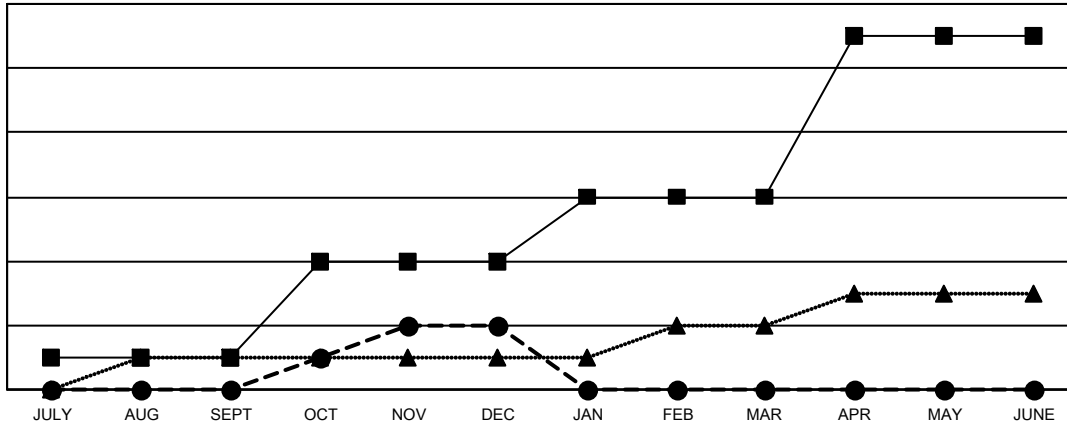
Multiple District 105

LOCATION: ENGLAND

Clubs			
RESULTS FOR 2021-2022			
QUARTER	NEW CLUB GOAL	NEW CLUBS	DROPPED CLUBS
JULY/AUG/SEPT	1	0	6
OCT/NOV/DEC	3	2	6
JAN/FEB/MAR	2	0	0
APR/MAY/JUNE	5	0	0

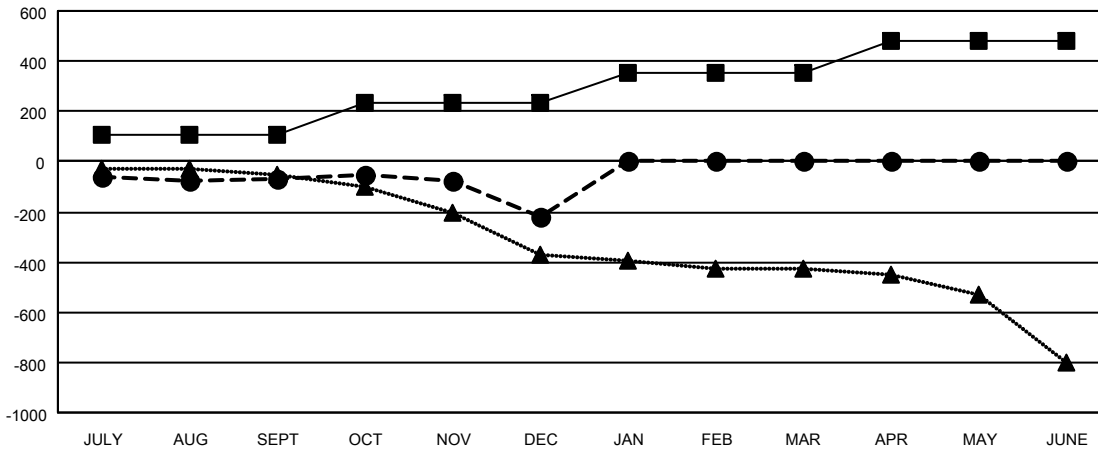
Members			
RESULTS FOR 2021-2022			
QUARTER	MEMBER GROWTH NET GOAL	MEMBER GROWTH ACTUAL	DROPPED MEMBERS ACTUAL (including transfers)
JULY/AUG/SEPT	104	217	248
OCT/NOV/DEC	129	345	449
JAN/FEB/MAR	122	0	0
APR/MAY/JUNE	127	0	0

GOALS AND ACTUAL NEW CLUBS CUMULATIVE



- CURRENT YEAR GOALS FOR NEW CLUBS
- CURRENT YEAR ACTUAL NEW CLUBS
- ▲- LAST YEAR ACTUAL NEW CLUBS

GOALS AND ACTUAL MEMBERS CUMULATIVE



- MEMBER GROWTH NET GOAL
- MEMBER GROWTH ACTUAL
- ▲- LAST YEAR MEMBERSHIP ACTUAL

DROPPED CLUBS: 12	216 CLUBS OF 595 ADDED 1 OR MORE NEW MEMBERS	<b>GENDER DISTRIBUTION</b>
<b>DROPPED MEMBERS</b>	<a href="#">CLICK HERE FOR CUMULATIVE MEMBERSHIP DATA</a>	MALE 7,175 (70.79%)
DECEASED 65		FEMALE 2,960 (29.20%)
CLUB CANCELLED 0		NON BINARY 1 (0.01%)
OTHER 632		PREFER NOT TO ANSWER 0 (0.00%)
<b>TOTAL 697</b>		TOTAL FAMILY UNIT MEMBERS 1,375
		FAMILY MEMBERS PAYING HALF DUES 699